




Bike Rack Ideas & Options – Parish Council / Ifold Stores

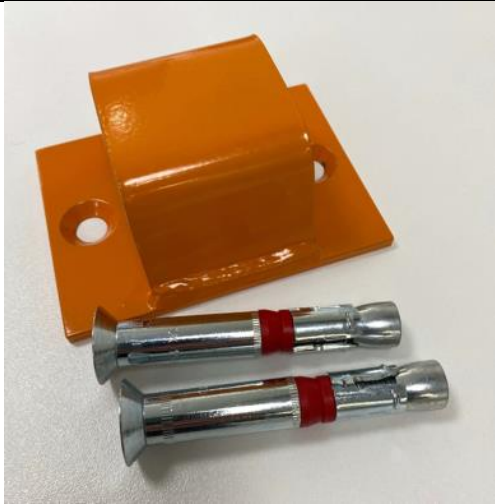
Location

Craig has suggested locating on the left of the shop, where his coffee trailer is in the below pic, as it's an unusable bit of parking with tarmac base, so that a rack can be bolted down. There is cctv in the shop however not directly aimed at that area. Also a Box for kids cycle helmets could be located on or by the concrete base in front of the garage, which could be bolted down with brackets and locked with a combination lock during the day (people can ask for combi in the shop, or a key could be held by the shop).



Type of Rack	Fixings	Pro / Con	Total Cost Inc VAT
<p>Toastrack Cycle Rack – preferred option https://www.thebikestoragecompany.co.uk/product/the-toastrack-cycle-rack/</p>  <p>6 space - 3 Hoop – 750mm x 750mm x 1500mm</p>	<p>bolt to the floor. Requires block paving or concrete base.</p>	<p>+ Bikes lean up against the bar, so less prone to falling over/less damage. Bike frame can be secured as well as wheels. - Bulkier, requires concrete or flat block paved floor</p>	<p>£306 inc shipping (3 hoop / 6 bikes) (further investigation can be researched in to suppliers of this type of rack)</p>
<p>Floor Mounted Cycle Rack https://www.thebikestoragecompany.co.uk/product/floor-mounted-cycle-rack/</p> 	<p>bolt to the floor. Requires block paving or concrete base.</p>	<p>+ Budget option - Only holds front or rear wheel so quick release wheeled bikes can still be stolen. Bikes can fall over easily if not used correctly. Can damage wheel shapes. Some chunkier wheels may not fit.</p>	<p>£99.59 inc shipping (5 space)</p>

5 Space – W 1340mm x D 330mm x H 300mm			
<p>Fixed Wall Mounted Cycle Rack</p>  <p>https://www.thebikestoragecompany.co.uk/product/fixed-wall-mounted-cycle-rack/</p> <p>6 x 320 x 95 x 195 mm</p>	Bolt to wall	<p>+ Space saver - Requires wall of shop, If shop changes mind in future or needs it to move. Only holds front or rear wheel so quick release wheeled bikes can still be stolen. Bikes can fall over easily if not used correctly. Can damage wheel shapes. Some chunkier wheels may not fit.</p>	£185.52 (for 6 individual mounts)
Secure Cycle Ground Anchor	Bolt to concrete floor	<p>+ discrete - Nothing to lean bike against. Bike needs own stand to stay upright. maybe too discrete and public will not use? Better as a secondary security measure for securing the</p>	£224.40 inc shipping (for 6 individual mounts)



<https://www.thebikestoragecompany.co.uk/product/secure-cycle-ground-anchor/>

frame with one of the other options that only secured wheel, more suited to home garages etc.
